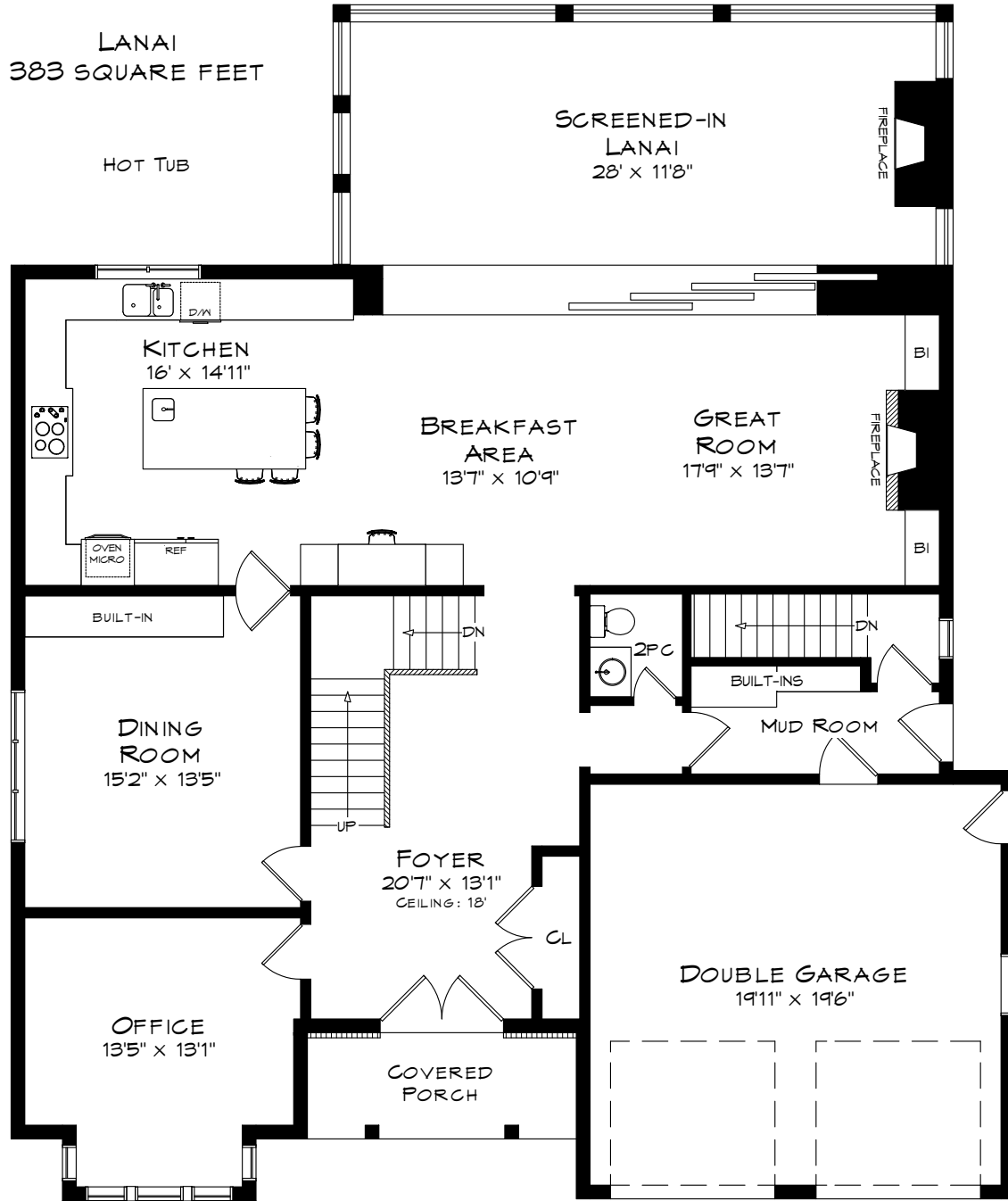


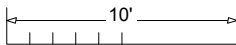
# 1479 DEVON ROAD

TOTAL SQUARE FOOTAGE  
5,086 SQ.FT.



MAIN LEVEL  
1,606 SQUARE FEET

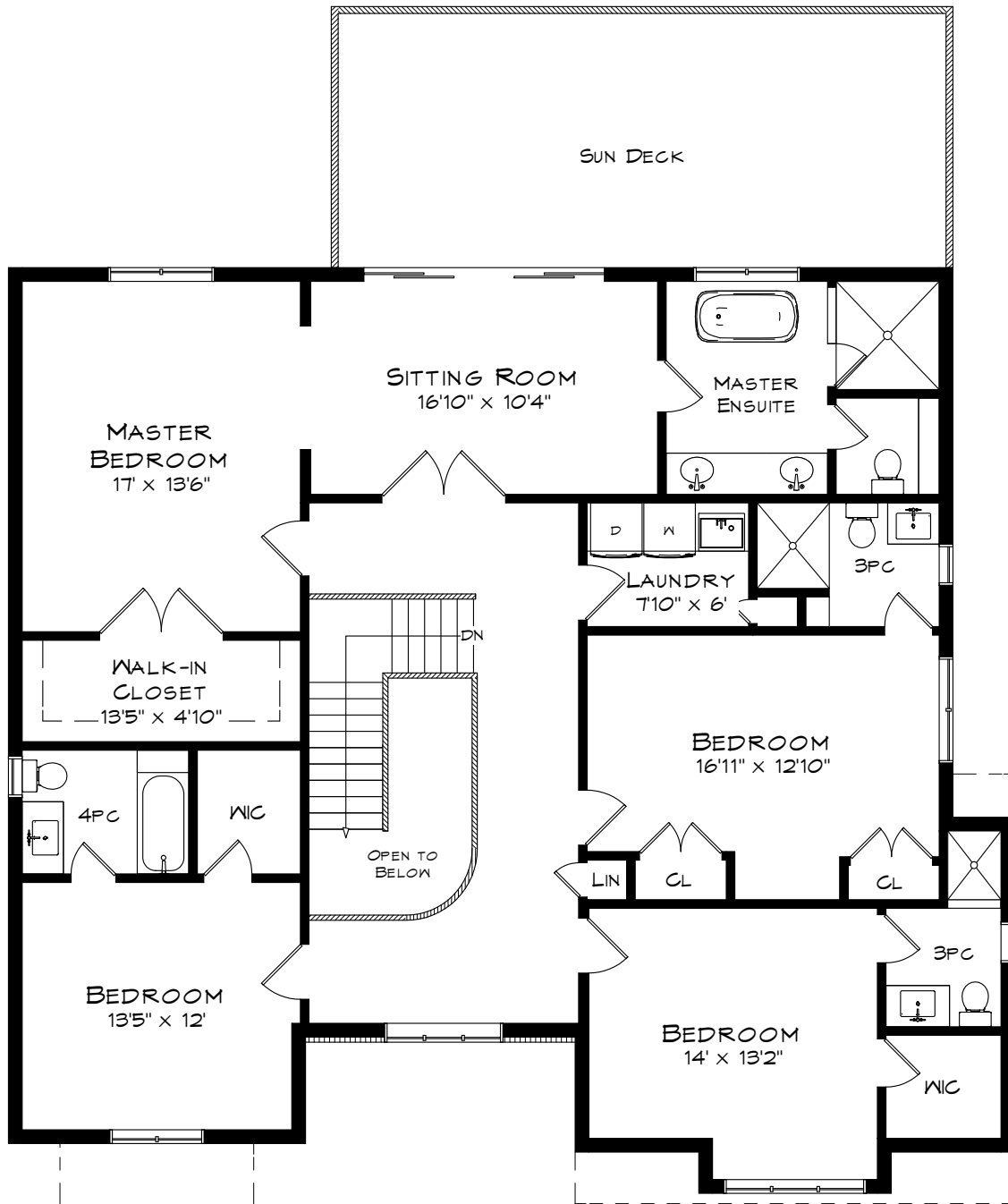
GARAGE  
425 SQUARE FEET



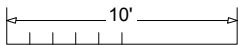
Note: Measurements may not be 100% accurate  
and should be used as a guideline only. E&OE  
April - 2014

DGR  
905-808-0241  
info@dgrplan.ca

# 1479 DEVON ROAD



UPPER LEVEL  
1,878 SQUARE FEET

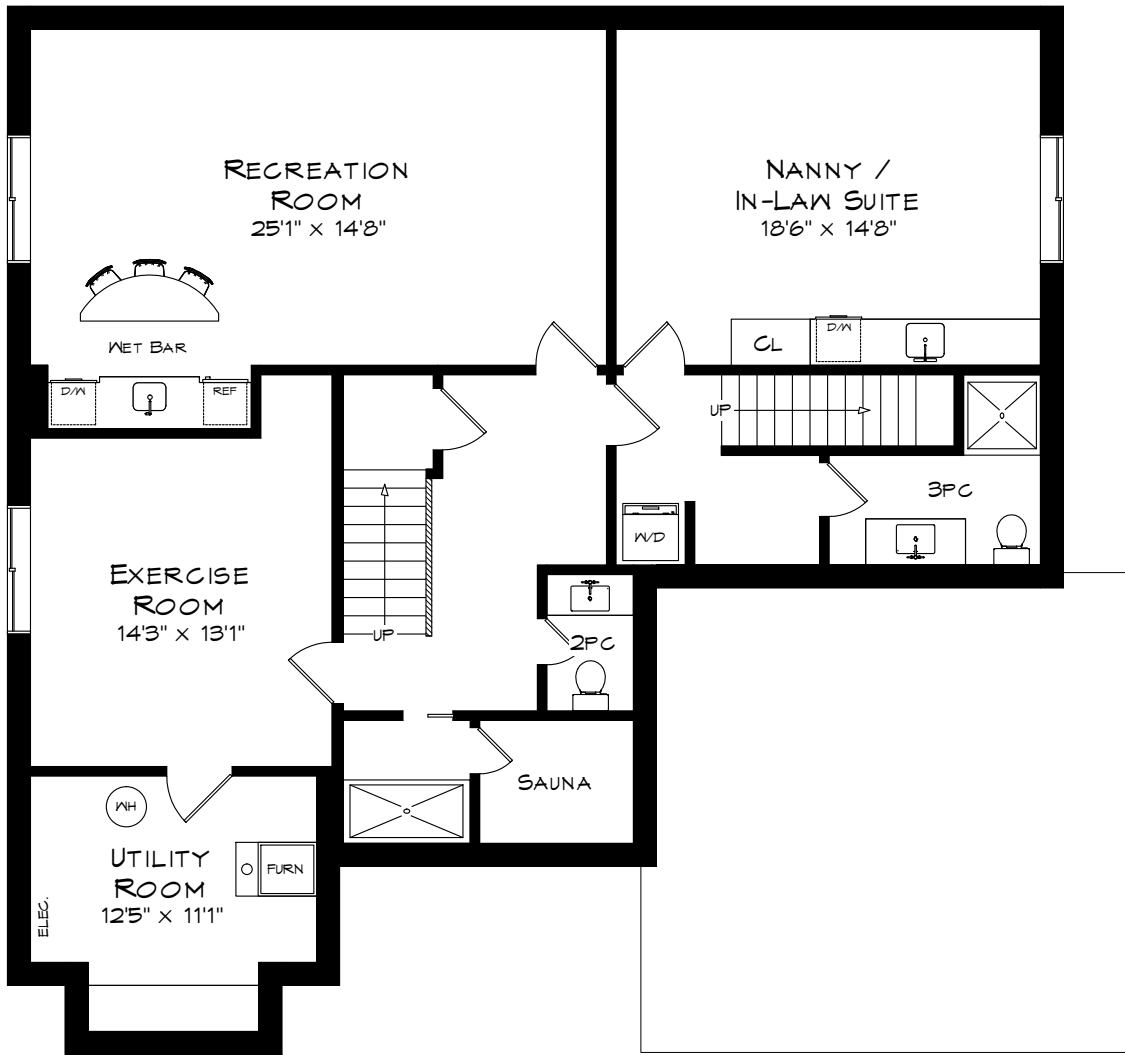


Note: Measurements may not be 100% accurate and should be used as a guideline only. E&OE

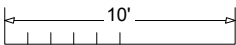
April - 2014

DGR 905-808-0241  
info@dgrplan.ca

# 1479 DEVON ROAD



LOWER LEVEL  
1,602 SQUARE FEET



Note: Measurements may not be 100% accurate and should be used as a guideline only. E&OE  
April - 2014

DGR 905-808-0241  
info@dgrplan.ca