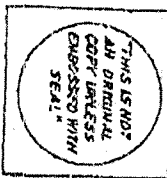


PLAN OF BUILDING LOCATION OF
PART OF LOT 4,
REGISTERED PLAN B-17
 CITY OF MISSISSAUGA
 REGIONAL MUNICIPALITY OF PEEL
 FORMERLY TOWNSHIP OF TORONTO, COUNTY OF PEEL
 SCALE 1:200
TARASICK, McMILLAN LIMITED
 ONTARIO LAND SURVEYORS
 1989

SURVEYOR'S CERTIFICATE
 I CERTIFY THAT THE FIELD SURVEY
 REPRESENTED ON THIS PLAN WAS
 COMPLETED ON FEBRUARY 7th, 1989

FEBRUARY 9th, 1989
 MISSISSAUGA, ONTARIO

W. P. TARASICK
 ONTARIO LAND SURVEYOR

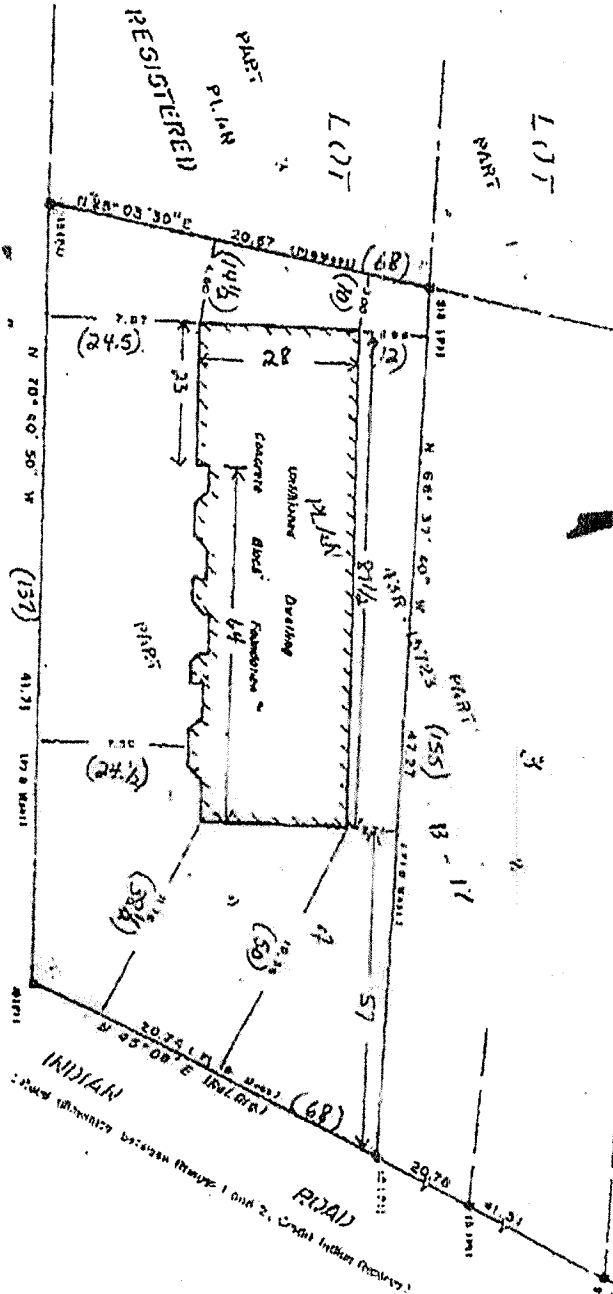


NOTE
 BEARINGS ARE ASTROGNOMIC AND ARE REFERRED
 TO THE NORTH-WESTERLY QUARTER OF INDIAN ROAD AS
 SHOWN ON REGISTERED PLAN B-17, HAVING A BEARING
 OF NORTH 45° 08' EAST.

- M D DELETES SURVEY MONUMENT FOUND
- D D DELETES SURVEY MONUMENT SET
- 11 D DELETES STANDARD IRON BAR
- 11 D DELETES IRON BAR
- 11 D DELETES REGISTERED PLAN B-17
- M D DELETES DEVICES MEASURED
- P DELETES DEPOSITED PLAN 438-45723

NETING NOTE
 DISTANCES SHOWN ON THIS PLAN ARE IN METRES AND
 CAN BE CONVERTED TO FEET BY DIVIDING BY 0.3048

	TARASICK, McMILLAN LIMITED	
	ONTARIO LAND SURVEYORS	106 LAKESHORE ROAD EAST MISSISSAUGA, ONTARIO L5G 1E3 228-9511
DRAWN BY: SW	FILE NO	



With Reference to Survey by LAW 38483, Registered on Map, 115 6855;
 : Fontenay; further show areas by Registered Plan B-17;